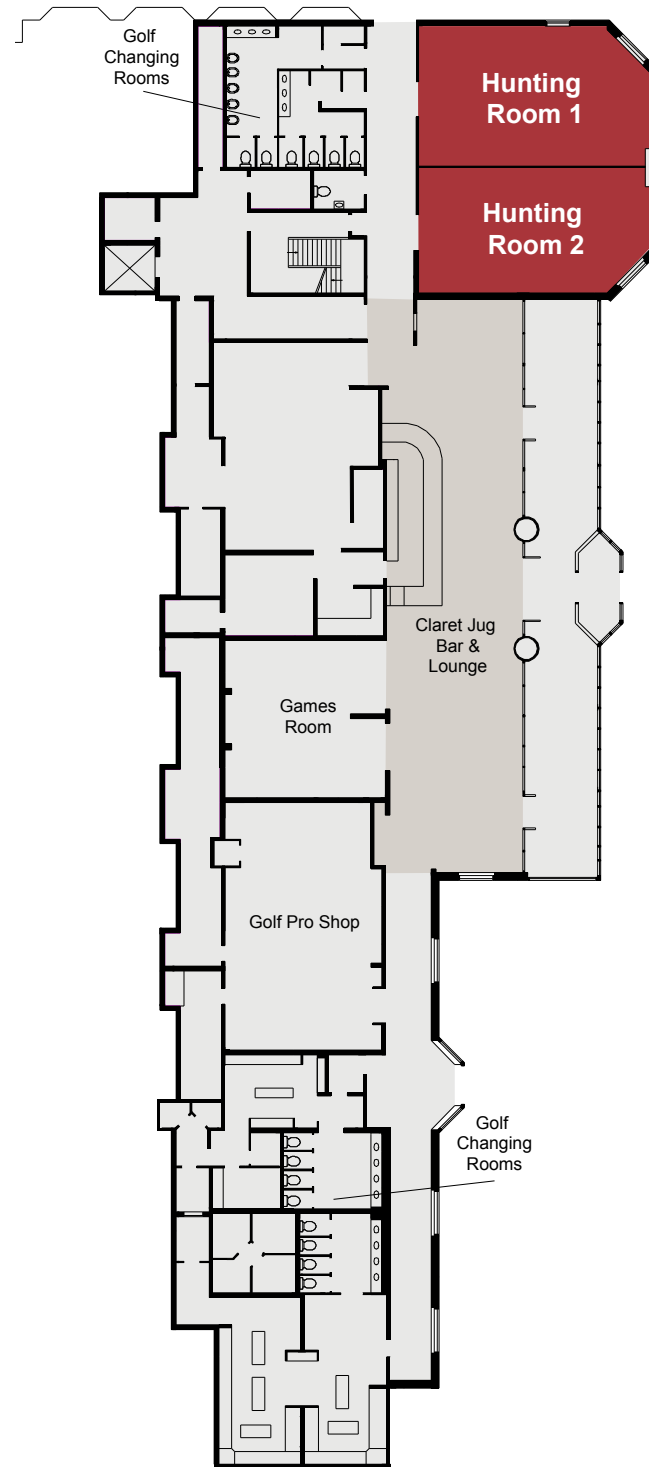




# SLALEY HALL



THE QHOTELS COLLECTION



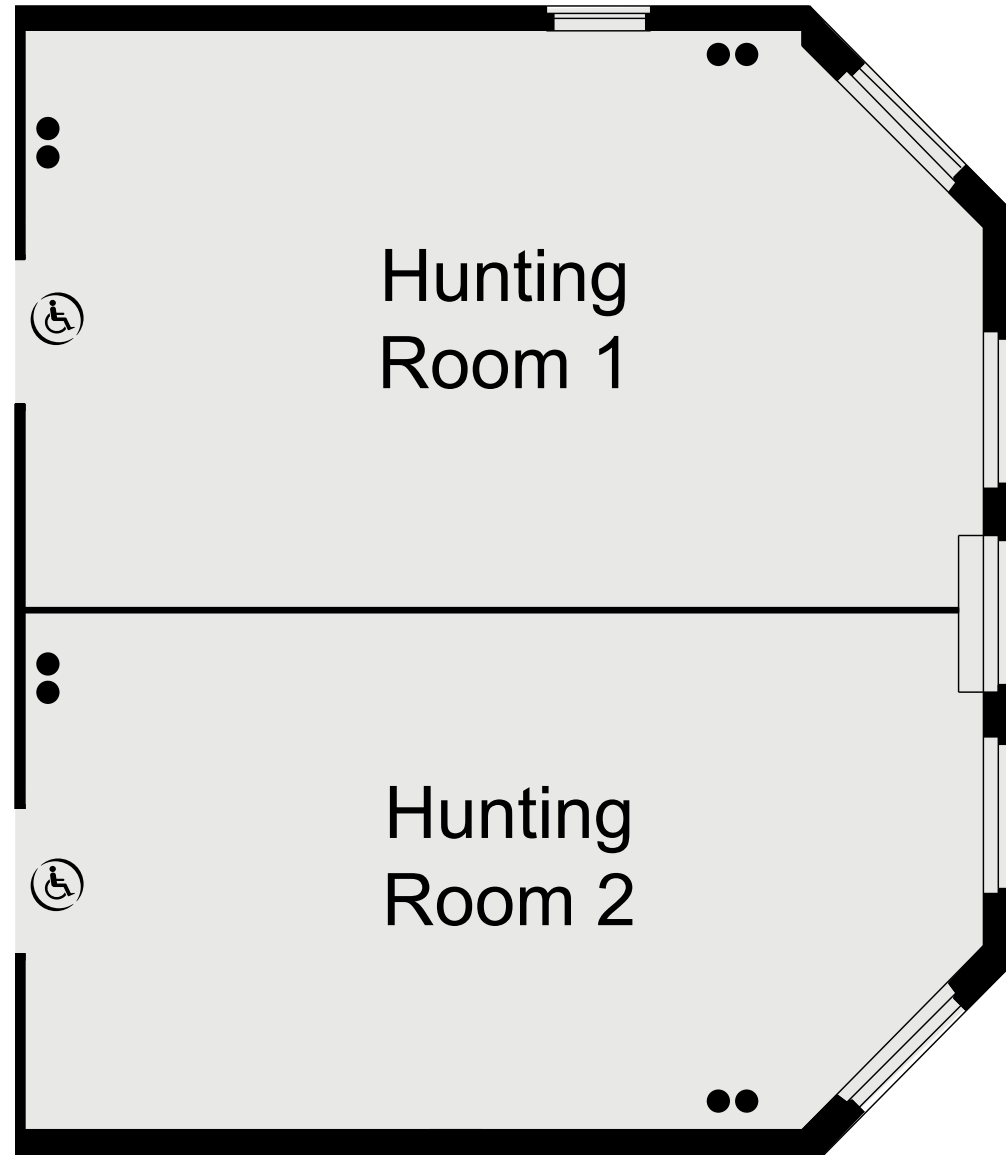
**SLALEY HALL**  
THE QHOTELS COLLECTION

GROUND FLOOR



**KEY**

- Single 13amp Power Point
- Double 13amp Power Point
- ☎ Telephone Socket
- ♿ Wheelchair Access

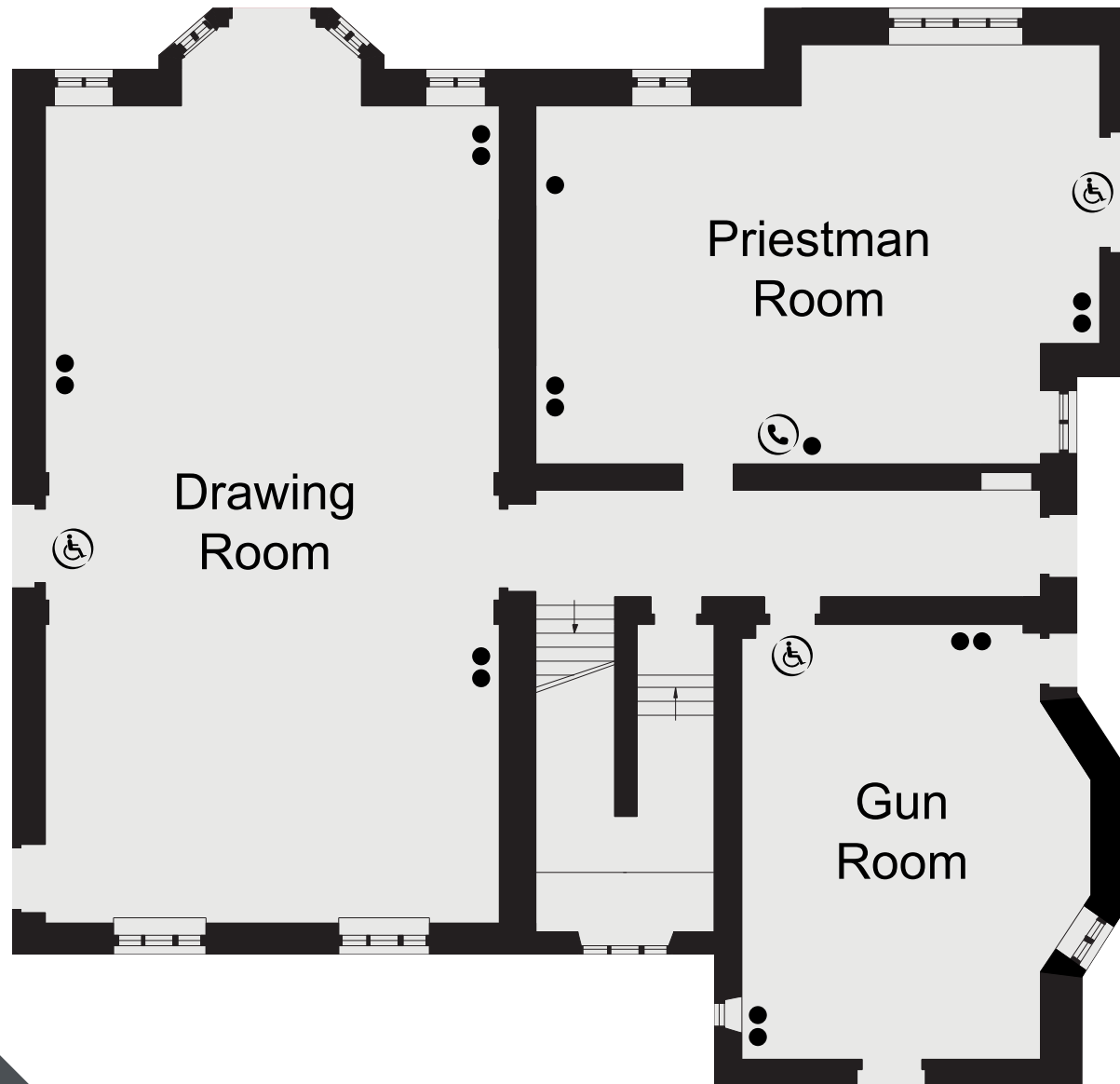


**SLALEY HALL**  
THE QHOTELS COLLECTION

GROUND FLOOR

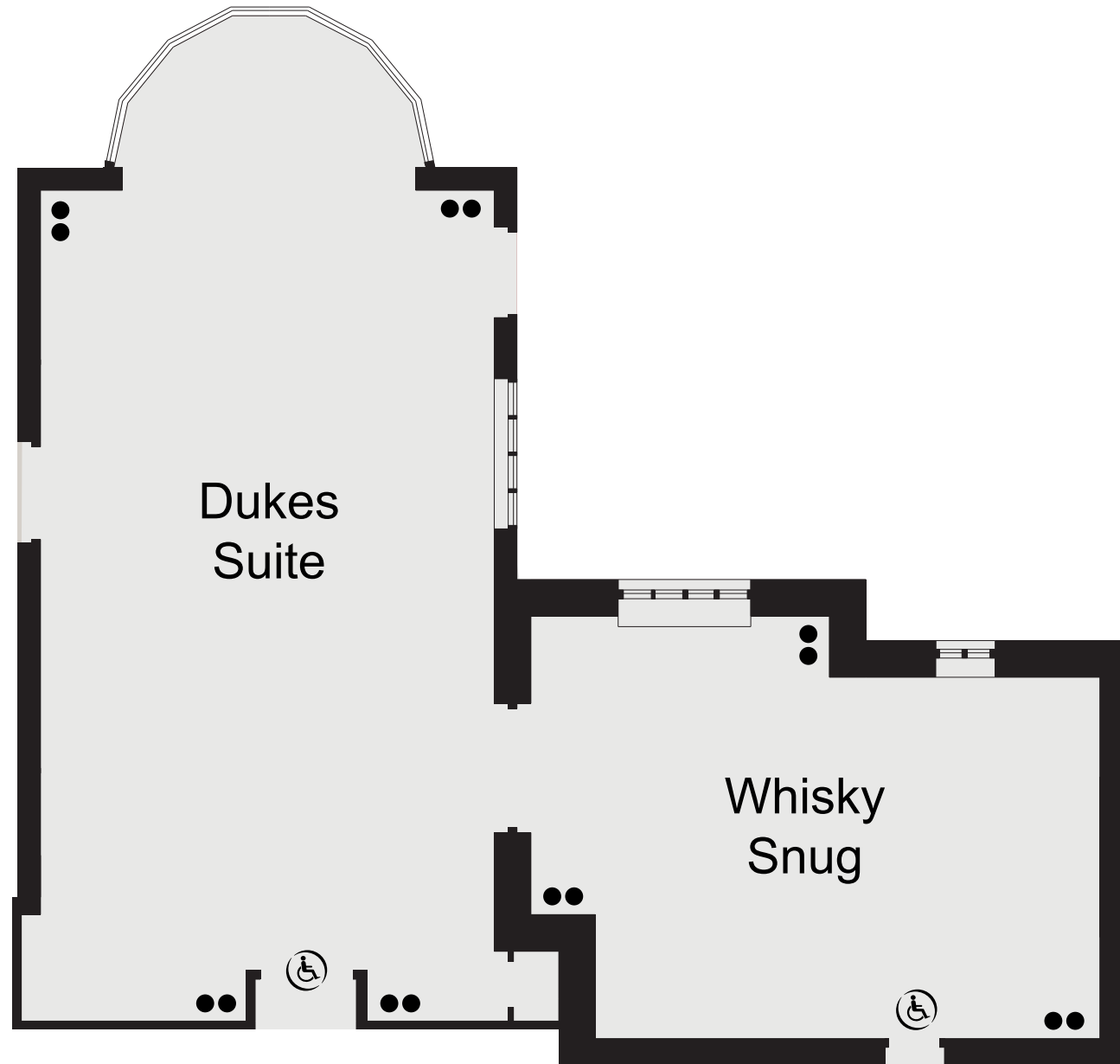
**KEY**

- Single 13amp Power Point
- Double 13amp Power Point
- ☎ Telephone Socket
- ♿ Wheelchair Access



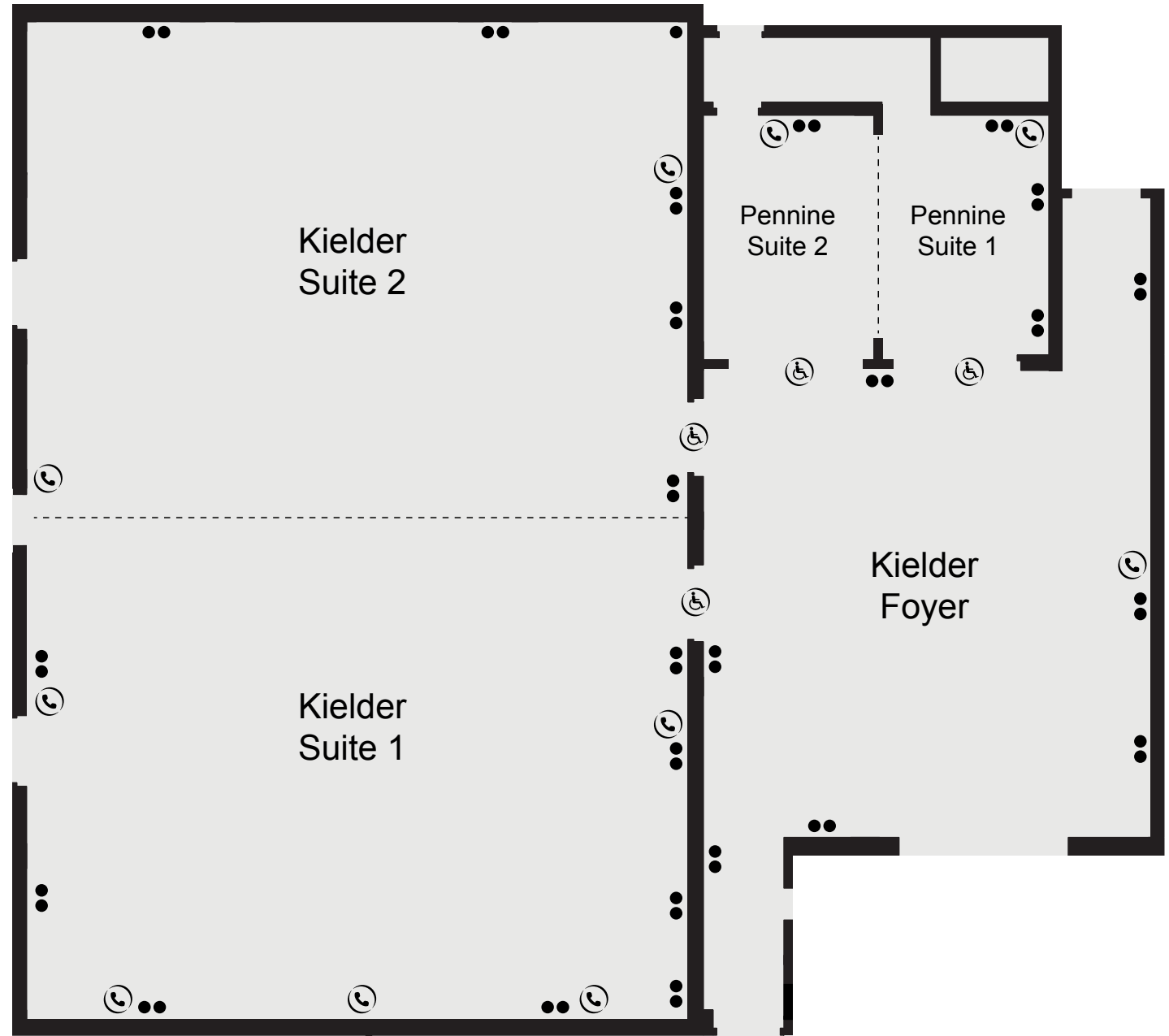
**KEY**

- Single 13amp Power Point
- Double 13amp Power Point
- ☎ Telephone Socket
- ♿ Wheelchair Access



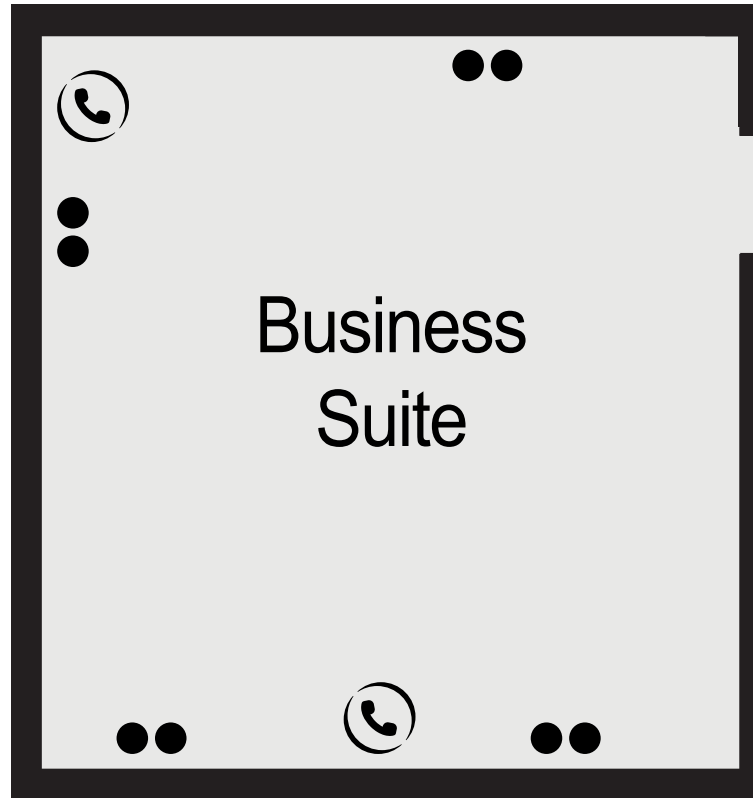
**KEY**

- Single 13amp Power Point
- Double 13amp Power Point
- ☎ Telephone Socket
- ♿ Wheelchair Access



**KEY**

- Single 13amp Power Point
- Double 13amp Power Point
- ☎ Telephone Socket
- ♿ Wheelchair Access



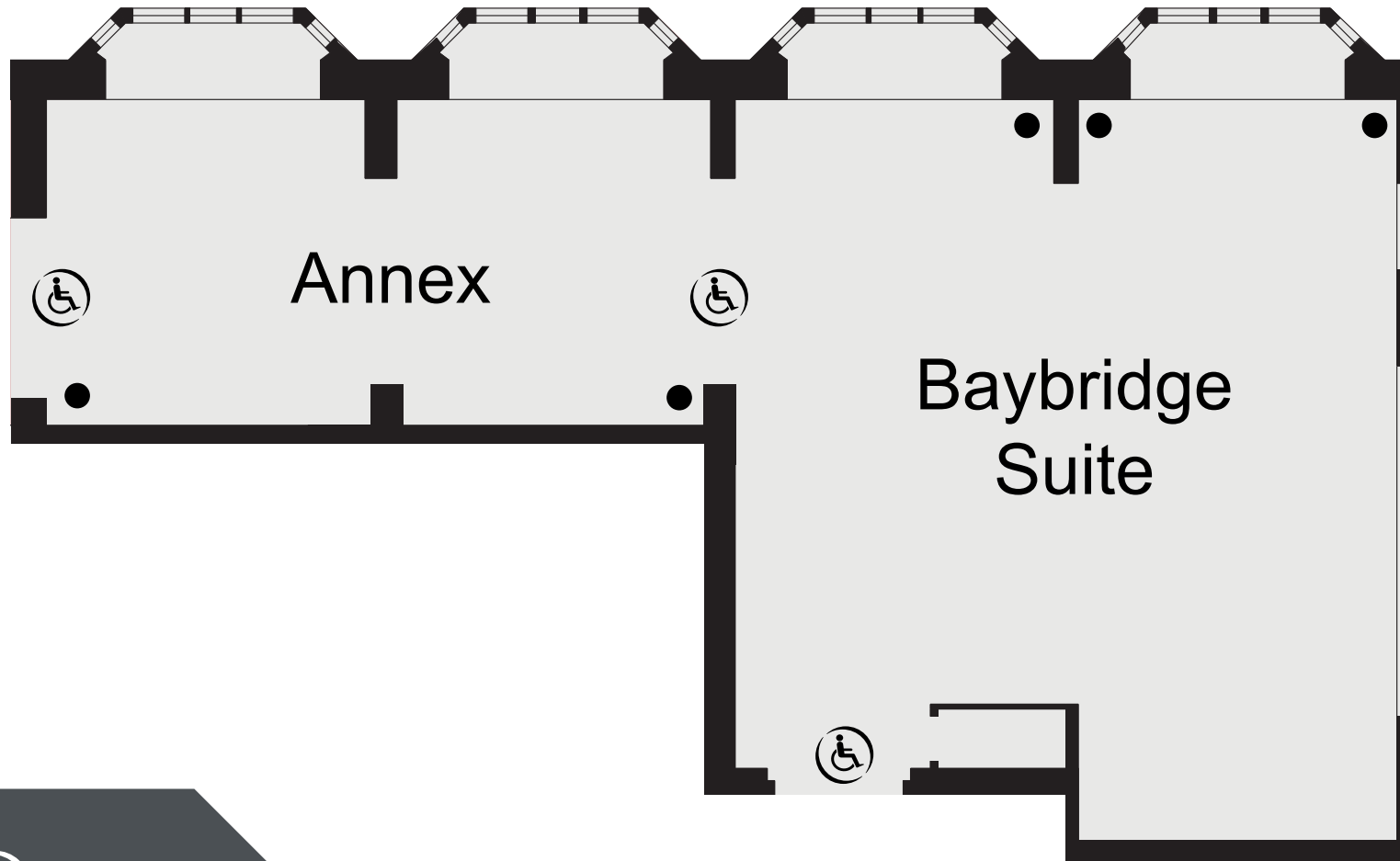
**SLALEY HALL**  
THE QHOTELS COLLECTION

SECOND FLOOR



**KEY**

- Single 13amp Power Point
- Double 13amp Power Point
- ☎ Telephone Socket
- ♿ Wheelchair Access



**SLALEY HALL**  
THE QHOTELS COLLECTION

SECOND FLOOR

# CAPACITIES

Meeting Room	Theatre	Classroom	Cabaret	Boardroom	U-Shape	Banqueting	Dimensions (m) W x L x H
Dukes Suite	120	48	48	35	25	70	6.8 x 13 x 2.92
Gun Room	25	N/A	N/A	12	12	12	4.9 x 7.0 x 3.1
Whisky Snug	50	18	24	15	10	20	6.5 x 8.9 x 2.92
Kielder Suite	350	220	240	150	150	300	15.7 x 23.8 x 4
Kielder 1 or 2	150	100	100	50	50	120	15.7 x 11.9 x 4
Baybridge Suite	36	27	32	24	18	40	7.4 x 8.1 x 2.54
Baybridge Annexe	20	8	8	10	N/A	10	3.8 x 7.7 x 2.54
Hunting Room	100	48	56	40	40	80	10.5 x 9.2 x 2.6
Hunting 1 or 2	50	20	24	24	20	30	5.25 x 9.2 x 2.6
Priestman Room	60	24	24	24	20	24	9.3 x 7 x 3.1
Pennine Suite	30	20	16	20	18	N/A	7.8 x 5.27 x 2.3
Pennine 1	12	N/A	N/A	10	N/A	N/A	4.2 x 5.27 x 2.3
Pennine 2	12	N/A	N/A	10	N/A	N/A	3.6 x 5.27 x 2.3
Business Suite	20	24	N/A	10	10	N/A	4.9 x 4.7 x 2



**SLALEY HALL**

THE QHOTELS COLLECTION